



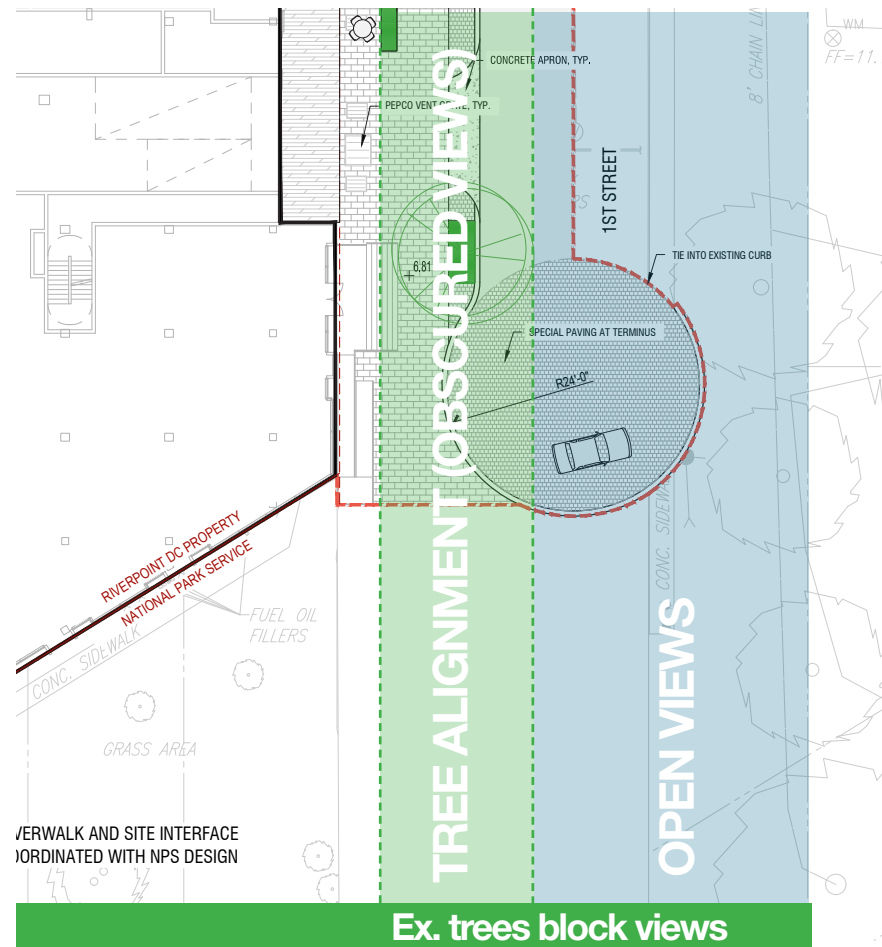
Key plan



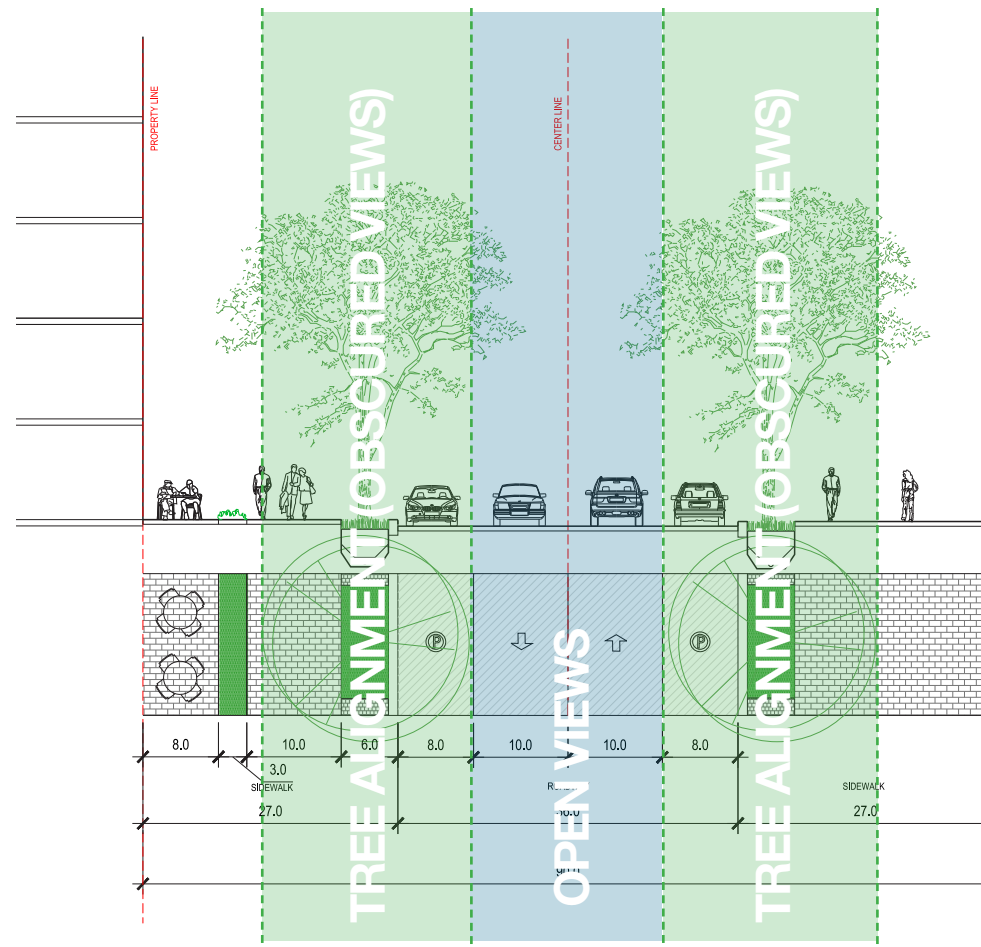
View down 1st Street from 1st/V



View at terminus of 1st Street



Plan



Section - Typical Profile

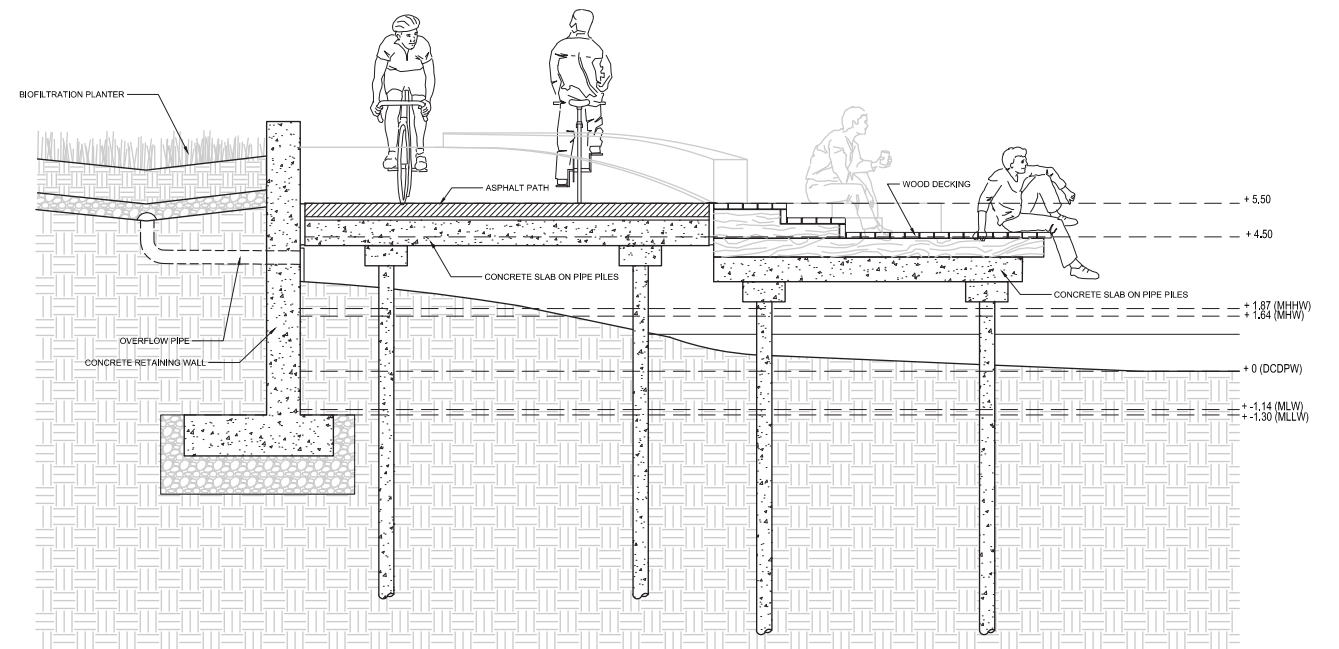
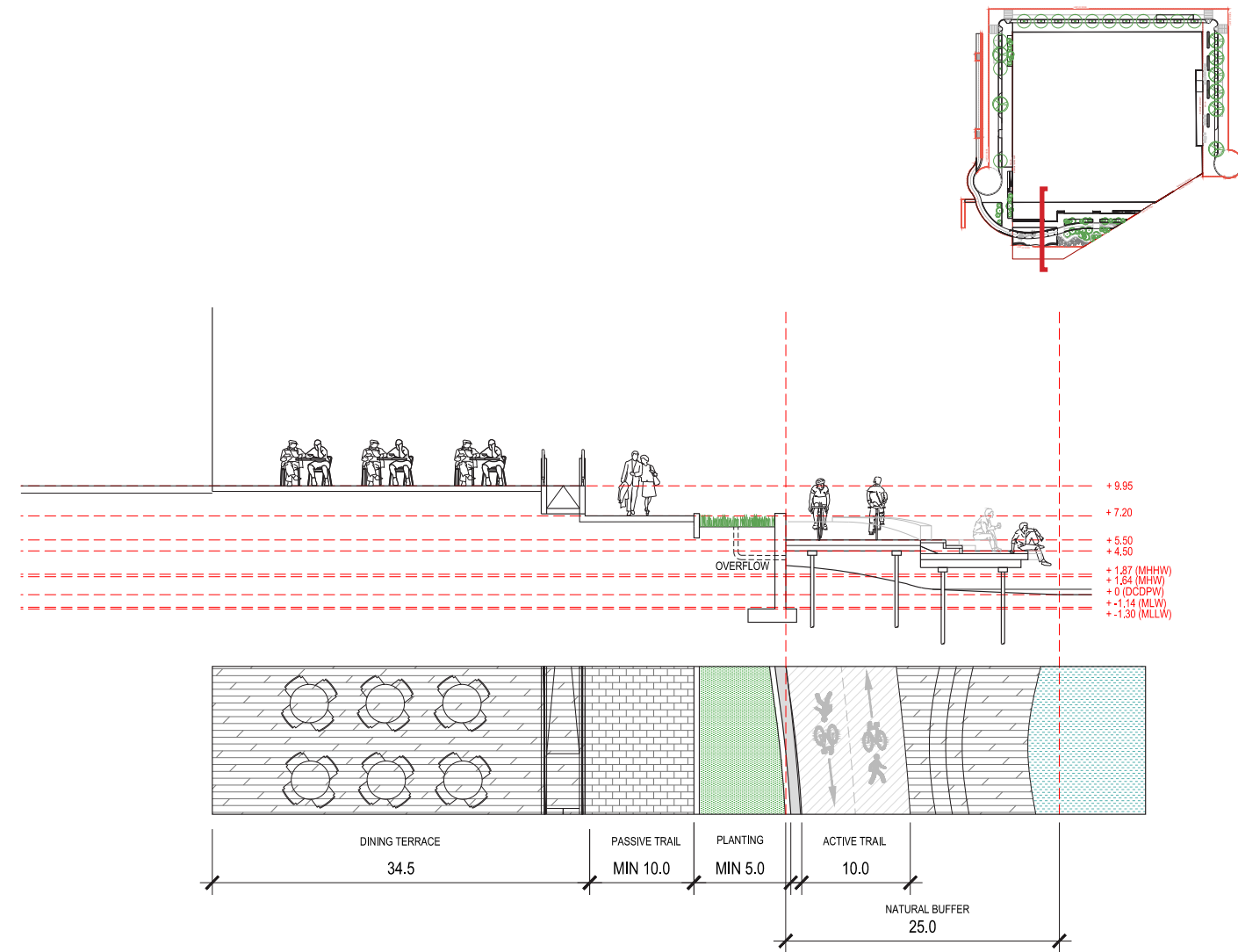
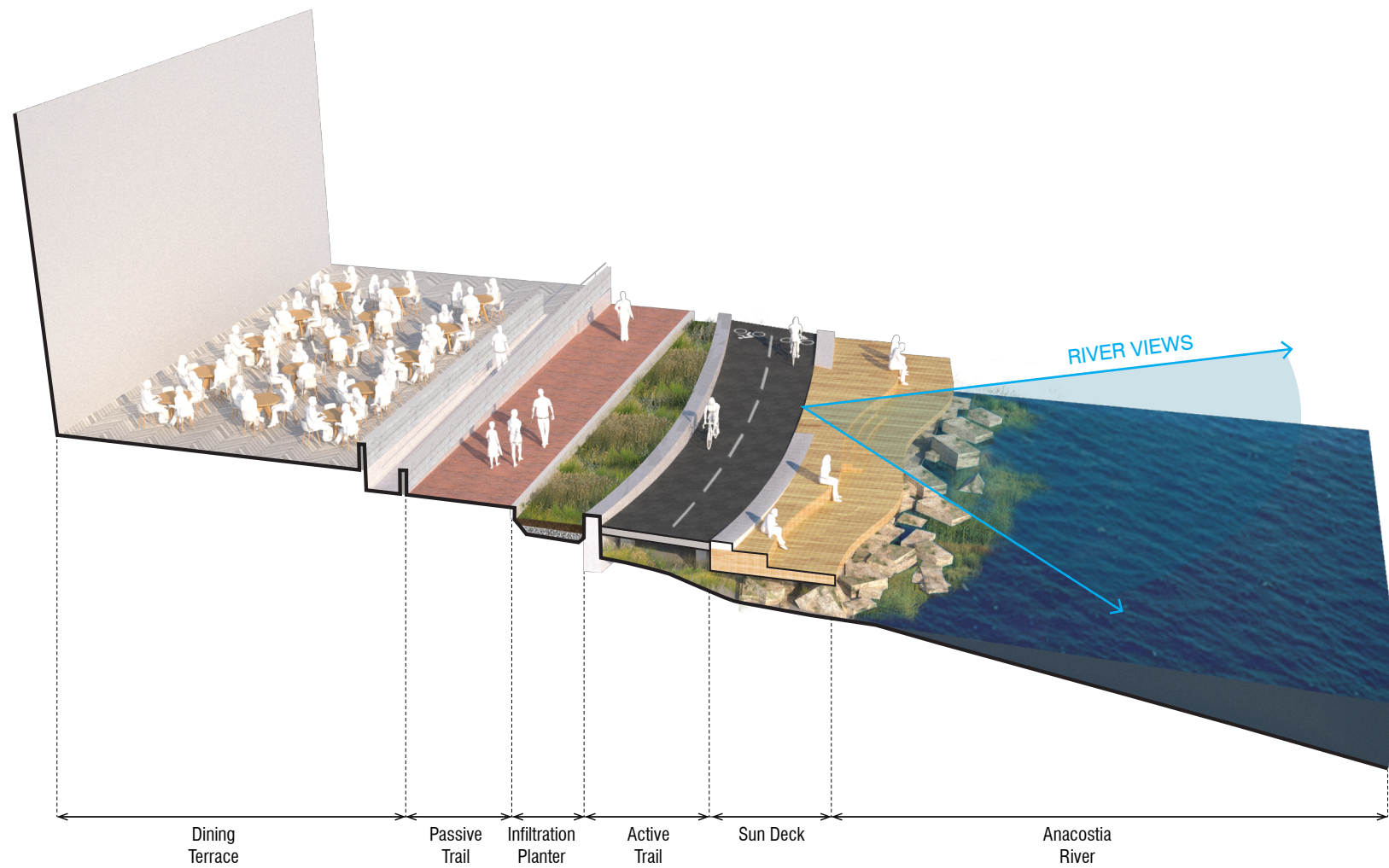
River Point - 2100 2nd St, SW

Square 613 / Lot 10

1st Street Viewshed Analysis WEST 8

2017 ZONING COMMISSION
District of Columbia
June 2, 2017 CASE NO. 17-05
EXHIBIT NO. 26A4

WEST 8
L17A



Trail/Sundeck Detail

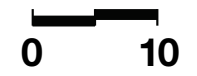
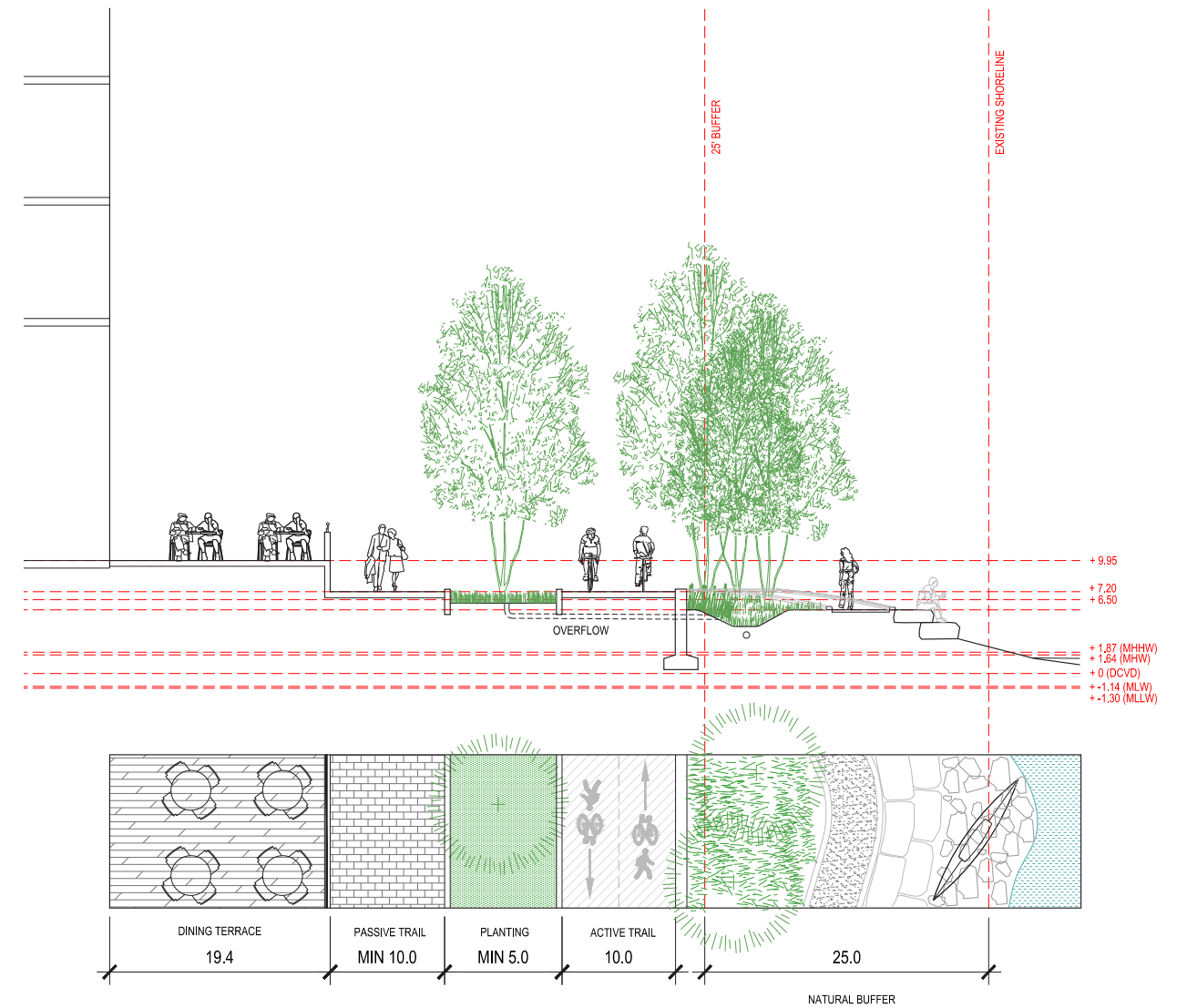
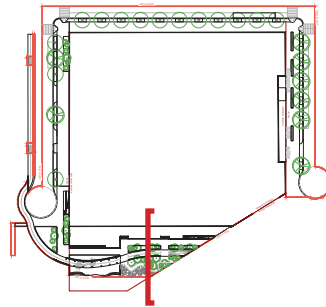
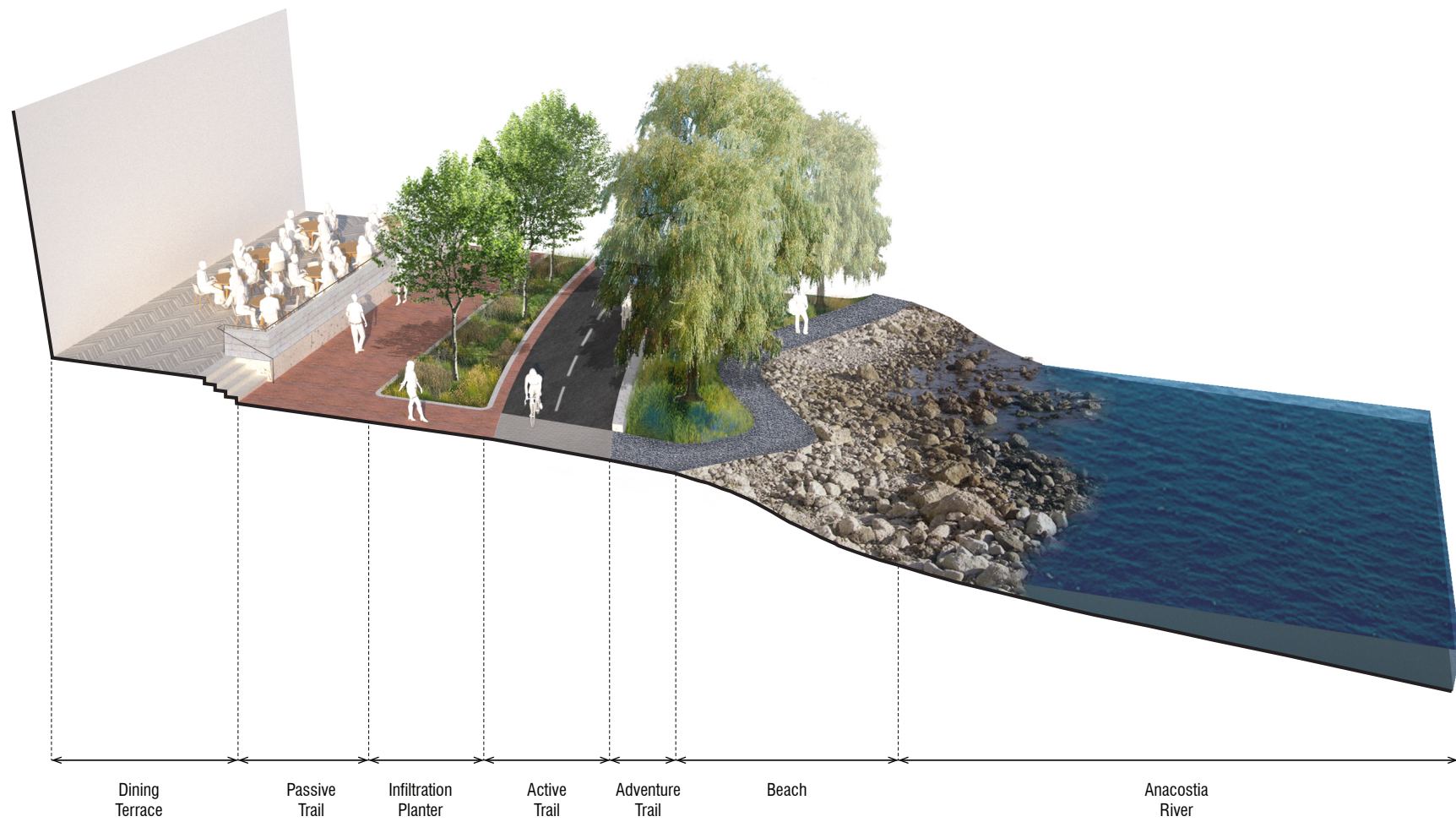
River Point - 2100 2nd St, SW

Square 613 / Lot 10

Site Sections: Waterfront at Deck

June 2, 2017

WEST 8
L21



River Point - 2100 2nd St, SW

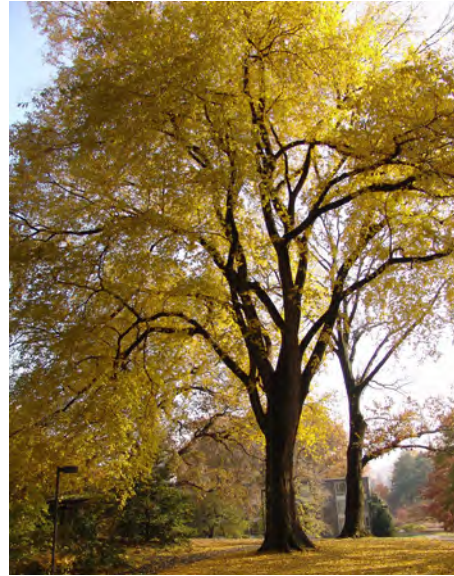
Square 613 / Lot 10

Site Sections: Waterfront at Adventure Trail

June 2, 2017

WEST 8
L22

Canopy Trees



Ulmus americana 'New Harmony'
(New Harmony Elm)



Platanus x acerifolia 'Morton Circle'
(Exclamation London Plane)



Ginkgo biloba 'Princeton Sentry'
(Ginkgo Princeton Sentry)

Shrubs, Groundcovers, Perennials



Achillea millefolium
(Common Yarrow)



Adiantum pedatum
(Northern Maidenhair Fern)



Eupatorium maculatum
(Joe Pye Weed)

Riparian Trees



Salix nigra (Black Willow)



Nyssa aquatica (Water Tupelo)



Taxodium distichum (Bald Cypress)

Emergent/Water's Edge



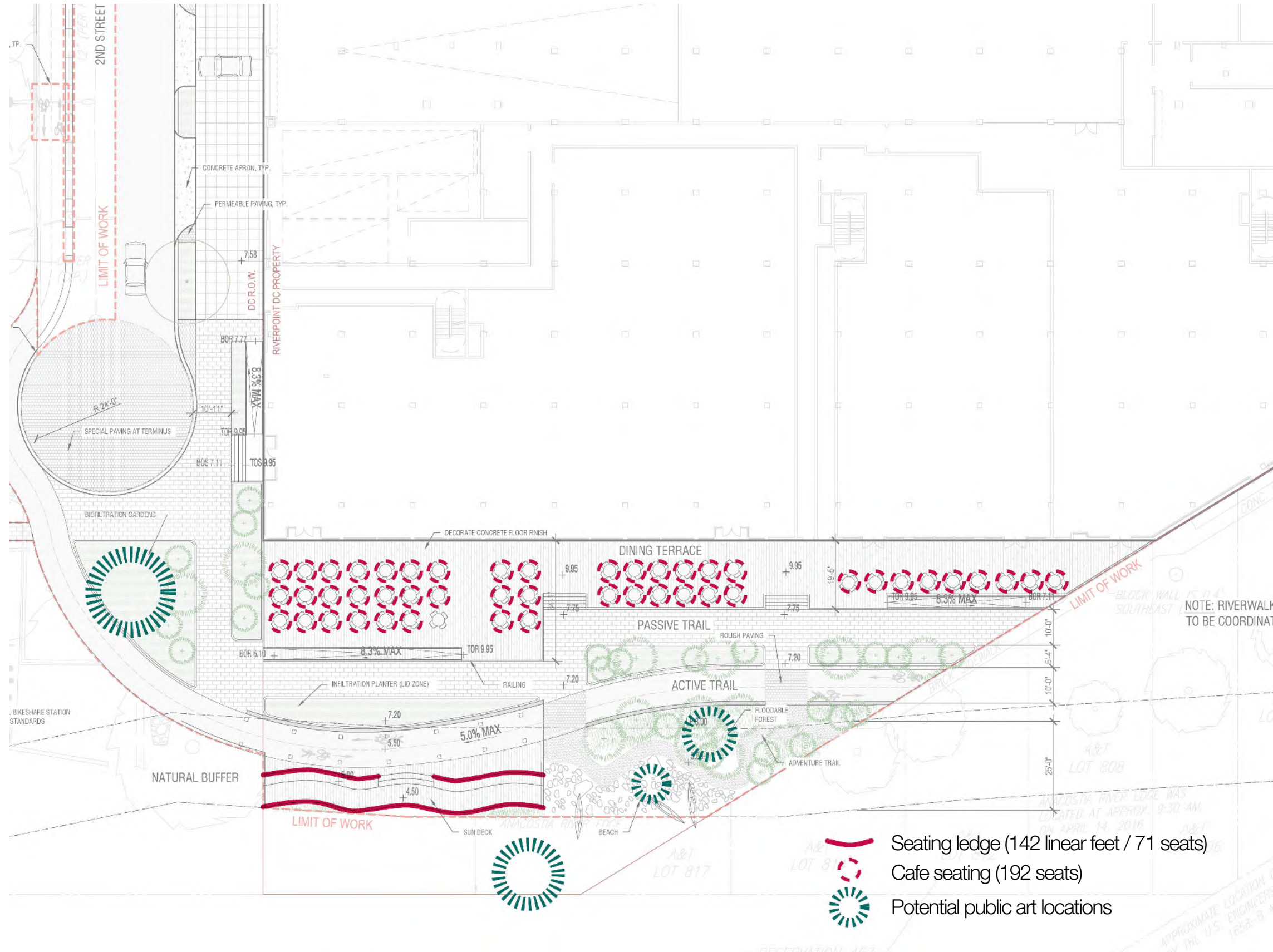
Juncus effusus
(Soft Rush)



Carex eburnea
(Bristle Leaf Sedge)



Iris virginica
(Great Blue Flag Iris)



Seating



Public art

River Point - 2100 2nd St, SW

Square 613 / Lot 10

Seating and Public Art at Waterfront WEST 8 L25A

June 2, 2017